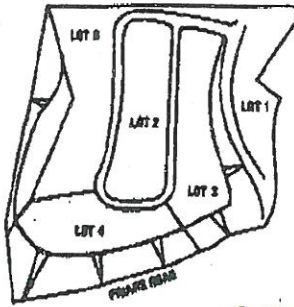


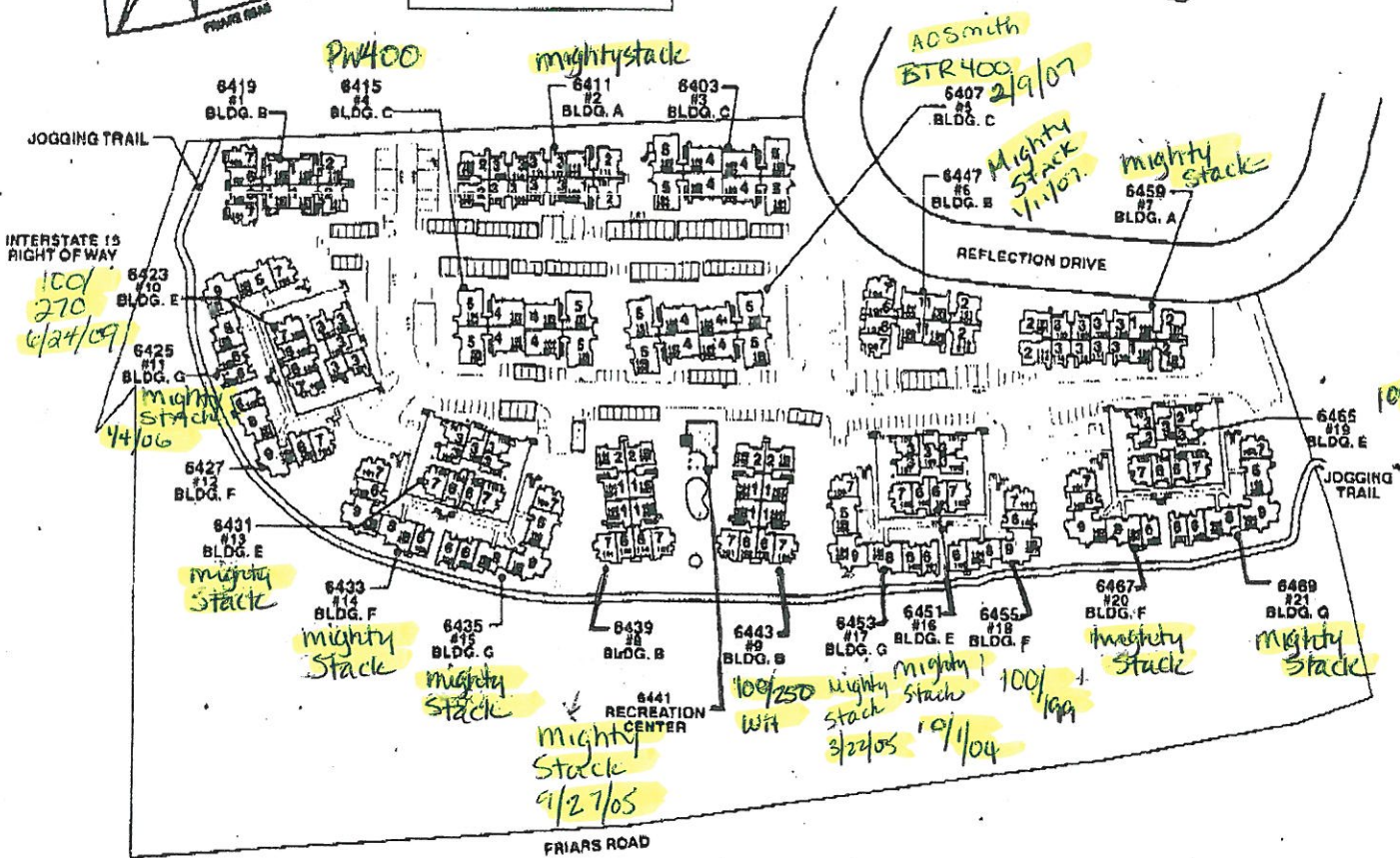
Office copy

Do NOT Remove from office!

Southridge Village



| Legend | |
|--------|-------------------------------------|
| ▲ | CONCRETE SURFACE WITH PLAN |
| ■ | PAVEMENT |
| □ | TRAMP |
| ○ | INDICATES TYPICAL FIRST LEVEL UNIT |
| ○ | INDICATES TYPICAL SECOND LEVEL UNIT |



6554 Ambrosia Drive San Diego, California 92124 Fax (619) 281-6551 www.eqr.com

(619) 281-5200



P.03/04 602 874 7435



PROPERTY ASSET MANAGEMENT

Page 1

FEB-19-2001 15:54



JOGGING TRAIL

PW500
6578
BLDG. K-1
#22

LEGEND

- SUPERSEDED OFFICE CITY PLAN
- BUILDING
- TRAIL
- UNDEVELOPED PHYSICAL PROPERTY LEVEL UNIT
- UNDEVELOPED PHYSICAL SECOND LEVEL UNIT



INTERSTATE 15

Mighty stack 5/14/06

6498
BLDG. J
#12

PW500
6490
BLDG. K
#11

7/26/07 tower

PW400
6474
BLDG. K
#7

6450
BLDG. K
#6

PW500
5/14/08
TB

6570
BLDG. H
#21

Cabana
6562
#20

Stadium
Tennis
Courts

The Oasis Pool

6530
BLDG. J
#16

1/7/08
Mighty
stack

The Hill Club
6554
#19

RENTAL CENTER
6546
BLDG. J
#17

mighty
stack 5/24/04

6538
BLDG. H
#18

New WH

6522
BLDG. L-1
#15

PW715
TB 2/6/09

6506
BLDG. H
#14

75/125
WH

6514
BLDG. L
#13

PW715

6466
BLDG. K
#10

PW500

1 - K

6458
BLDG. K
#8

PW500

4 - L

6482
BLDG. L
#8

PW715

6434
BLDG. H
#4

80/180 WH

6442
BLDG. L
#5

PW715

AMBROSIA DRIVE

6418
BLDG. L
#2

PW715

6410
BLDG. H
#3

6426
BLDG. K
#1

PW500

Sunset Village

5100's = First Floor
5200's = Second Floor

LA MIRAGE BOILERS INSTALLED

BLDG #
PAGE 1 OF MAP

BOILER/WH MODEL #

INSTALL
DATE

| |
|---------------------|
| 6411 #2 REFLECTION |
| 6415 #4 REFLECTION |
| 6425 #11 REFLECTION |
| 6431 #13 REFLECTION |
| 6433 #14 REFLECTION |
| 6435 #15 REFLECTION |
| 6439 #8 REFLECTION |
| 6443 #9 REFLECTION |
| 6455 #18 REFLECTION |
| 6465 #19 REFLECTION |
| 6467 #18 REFLECTION |
| 6469 #21 REFLECTION |
| 6453 #18 REFLECTION |
| 6459 #7 REFLECTION |
| 6407 #5 REFLECTION |
| 6423 #10 REFLECTION |
| 6455 #18 REFLECTION |

| |
|-------------------------|
| MIGHTYSTACK |
| LAARS PW0400 |
| MIGHTYSTACK |
| MIGHTYSTACK |
| MIGHTYSTACK |
| MIGHTYSTACK |
| MIGHTYSTACK |
| 100/250 WATER HEATER |
| 100/199 WATER HEATER |
| 100/270 WATER HEATER |
| MIGHTYSTACK |
| MIGHTYSTACK |
| MIGHTYSTACK |
| MIGHTYSTACK |
| BTR400 WATER HEATER |
| 100/270 A/S WATERHEATER |
| MIGHTY STACK |

| |
|------------|
| 8/7/2001 |
| 3/4/2002 |
| 1/4/2006 |
| 12/5/2002 |
| 7/16/2002 |
| 1/2/2003 |
| 9/27/2005 |
| 9/18/2003 |
| 11/18/2003 |
| 4/14/2006 |
| 10/12/2001 |
| 3/31/2003 |
| 3/22/2005 |
| 3/8/2002 |
| 2/9/2007 |
| 6/24/2009 |
| 4/17/2007 |

PAGE 2 OF MAP

| |
|-------------------|
| 6578 #22 AMBROSIA |
| 6490 #11 AMBROSIA |
| 6490 #11 AMBROSIA |
| 6474 #7 AMBROSIA |
| 6450 #6 AMBROSIA |
| 6426 #1 AMBROSIA |
| 6418 #2 AMBROSIA |
| 6442 #5 AMBROSIA |
| 6434 #4 AMBROSIA |
| 6482 #4 AMBROSIA |
| 6458 #3 AMBROSIA |
| 6466 #10 AMBROSIA |
| 6514 #13 AMBROSIA |
| 6506 #14 AMBROSIA |
| 6522 #15 AMBROSIA |
| 6538 #18 AMBROSIA |
| 6546 #17 AMBROSIA |
| 6586 #23 AMBROSIA |
| 6586 #23 AMBROSIA |
| 6586 #23 AMBROSIA |
| 6498 #12 AMBROSIA |
| 6530 #16 AMBROSIA |
| 6578 #22 AMBROSIA |
| 6522 #15 AMBROSIA |
| 6426 #1 AMBROSIA |
| 6418 #2 AMBROSIA |
| 6450 #6 AMBROSIA |

| |
|----------------------|
| LAARS PW0500 |
| LAARS PW0500 |
| LAARS 788 TANK |
| LAARS PW0400 |
| LAARS PW0500 |
| LAARS PW0500 |
| LAARS PW0715 |
| LAARS PW0715 |
| 80/180 WATER HEATER |
| LAARS PW0715 |
| LAARS PW0500 |
| LAARS PW0500 |
| LAARS PW0715 |
| 75/125 WATER HEATER |
| LAARS PW0715 |
| WH(THEY INSTALLED) |
| MIGHTY STACK |
| LAARS PW0715 |
| 119 GAL STORAGE TANK |
| PW715 TUBE BUNDLE |
| MIGHTY STACK |
| MIGHTY STACK |
| PW0500 TUBE BUNDLE |
| PW0715 TUBE BUNDLE |
| PW0500 TUBE BUNDLE |
| PW0715 TUBE BUNDLE |
| PW0500 TUBE BUNDLE |

| |
|------------|
| 10/30/2001 |
| 10/29/2001 |
| 7/26/2007 |
| 10/25/2001 |
| 10/18/2001 |
| 10/24/2001 |
| 6/12/2001 |
| 6/7/2001 |
| 2/11/2002 |
| 5/31/2001 |
| 6/6/2001 |
| 10/23/2001 |
| 9/19/2001 |
| 9/17/2002 |
| 9/25/2001 |
| 7/20/2004 |
| 5/24/2004 |
| 5/30/2001 |
| 2/21/2009 |
| 3/17/2009 |
| 8/18/2006 |
| 1/7/2008 |
| 2/27/2009 |
| 2/6/2009 |
| 9/24/2008 |
| 7/29/2008 |
| 5/14/2008 |

TB-9/19/06

PAGE 3 OF MAP

| |
|---------------------|
| 6595 #16 REFLECTION |
| 6595 #16 REFLECTION |
| 6451 #16 REFLECTION |
| 6481 #1 REFLECTION |
| 6489 #2 REFLECTION |
| 6497 #3 REFLECTION |
| 6505 #4 REFLECTION |
| 6553 #8 REFLECTION |
| 6577 #13 REFLECTION |
| 6545 #10 REFLECTION |
| 6577 #13 REFLECTION |

| |
|-------------------|
| LAARS PW0250 |
| PW250 TUBE BUNDLE |
| MIGHTYSTACK |
| LAARS PW0250 |
| LAARS PW0400 |
| LAARS PW0250 |
| MIGHTYSTACK |
| MIGHTYSTACK |
| LAARS PW0250 |
| MIGHTYSTACK |
| PW250 TUBE BUNDLE |

| |
|------------|
| 11/6/2001 |
| 5/6/2008 |
| 10/1/2004 |
| 9/24/2001 |
| 10/2/2001 |
| 10/18/2002 |
| 10/11/2002 |
| 2/8/2007 |
| 9/10/2001 |
| 5/9/2007 |
| 4/9/2007 |

TB-4/9/07

LA MIRAGE BOILERS

| <u>BLDG #</u> | <u>MODEL #</u> |
|---------------|----------------|
| 6474 | PW500 |
| 6450 | PW500 |
| 6489 | PW400 |
| 6577 | PW250 |
| 6411 | MIGHTY STACK |
| 6497 | PW250 |
| 6481 | PW250 |
| 6490 | PW500 |
| 6514 | PW715 |
| 6546 | MIGHTY STACK |
| 6553 | MIGHTY STACK |
| 6545 | MIGHTY STACK |
| 6505 | MIGHTY STACK |
| 6469 | MIGHTY STACK |
| 6467 | MIGHTY STACK |
| 6447 | MIGHTY STACK |
| 6459 | MIGHTY STACK |
| 6506 | MIGHTY STACK |
| 6451 | MIGHTY STACK |
| 6453 | MIGHTY STACK |
| 6439 | MIGHTY STACK |
| 6415 | HH400 |
| 6431 | MIGHTY STACK |
| 6433 | MIGHTY STACK |
| 6435 | MIGHTY STACK |
| 6425 | MIGHTY STACK |
| 6426 | PW500 |
| 6418 | PW715 |
| 6442 | PW715 |
| 6458 | PW500 |
| 6466 | PW500 |
| 6482 | PW715 |
| 6498 | MIGHTY STACK |
| 6522 | PW715 |
| 6578 | PW500 |
| 6586 | PW715 |